



CATALOGUE NO. 8635.0

EMBARGOED UNTIL 11.30 A.M. 5 JULY 1995

TOURIST ACCOMMODATION, AUSTRALIA, MARCH QUARTER 1995

MAIN FEATURES

MARCH QUARTER 1995
COMPARED WITH
MARCH QUARTER 1994

HOTELS, MOTELS AND GUEST HOUSES

- Rooms available increased slightly overall to 167,377 although New South Wales, Victoria and South Australia recorded small decreases.
- Room nights occupied increased by 4.7 per cent to 8.7 million overall with increases in all States/Territories, including 9.8 per cent in Victoria, 8.3 per cent in Northern Territory and 6.7 per cent in South Australia.
- The room occupancy rate overall rose from 55.9 per cent to 58.1 per cent, with four star and five star rated establishments recording increases of 3.9 percentage points and 2.6 percentage points respectively.
- Guest nights increased by 3.4 per cent to 15.5 million and the bed occupancy rate increased from 34.8 per cent to 35.7 per cent.
- Guest arrivals increased by 2.3 per cent to 7.5 million while average length of stay increased from 2.0 days to 2.1 days overall, ranging from 2.5 days for Western Australia to 1.8 days for Tasmania. By star rating, average length of stay ranged from 2.5 days for five star to 1.8 days for two star establishments.
- Takings from accommodation increased by 10.3 per cent from \$703.9m to \$776.7m while average takings per room night occupied increased overall from \$84 to \$89, ranging from \$93 for New South Wales and Queensland to \$74 for South Australia.
- Employment (full-time and part-time) increased by 2.3 per cent from 101,873 persons to 104,208 persons.

HOLIDAY FLATS, UNITS AND HOUSES

- The number of units, etc. available for short-term letting increased by 7.3 per cent to 38,009 while unit nights occupied increased by 7.9 per cent to 1.9 million.
- The unit occupancy rate increased from 56.1 per cent to 56.3 per cent.
- Unit lettings increased by 9.9 per cent to 0.35 million but average length of stay fell slightly from 5.7 days to 5.6 days.
- Accommodation takings increased by 14.7 per cent from \$116.2m to \$133.2m while average takings per unit night occupied increased from \$65 to \$69.

CARAVAN PARKS

- Capacity available increased slightly from 287,578 to 287,979 powered and unpowered sites and cabins, etc. of which 47,217 sites, etc. (16.4 per cent) were occupied by long-term residents, 45,195 sites (15.7 per cent) were permanently reserved but only casually occupied by their tenants and an average of 38,322 sites (13.3 per cent) were occupied by other short-term guests.
- Site nights occupied increased by 0.6 per cent to 11.8 million and the site occupancy rate rose from 45.2 per cent to 45.4 per cent.
- Takings from accommodation increased by 3.8 per cent from \$117.1m to \$121.6m at an average of \$10 per site night occupied.

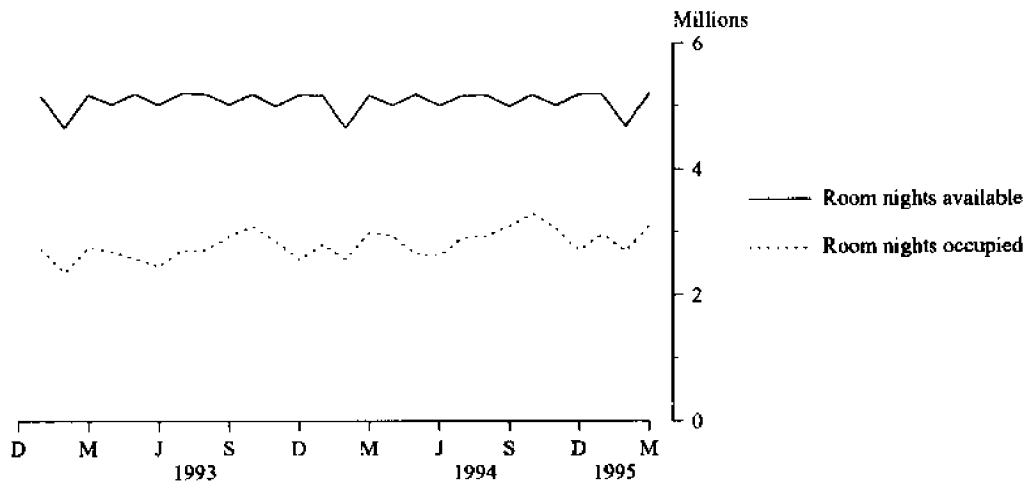
VISITOR HOSTELS

- Bed spaces available decreased slightly from 25,748 to 25,660 and guest nights increased by 4.3 per cent to 1.09 million.
- The bed occupancy rate increased from 45.3 per cent to 47.1 per cent.
- Accommodation takings increased by 10.0 per cent from \$12.6m to \$13.8m and average takings per guest night increased from \$12 to \$13.

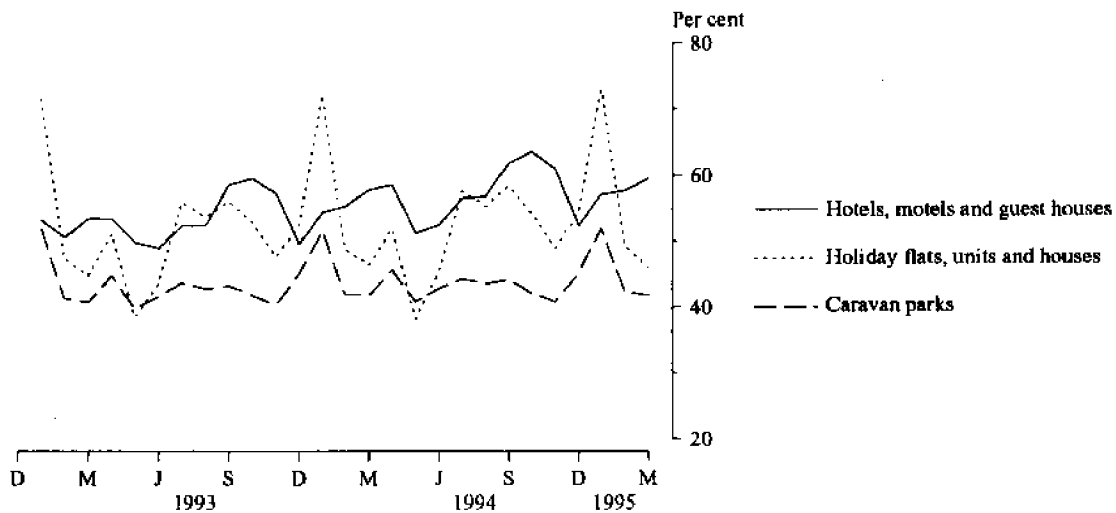
INQUIRIES

- *for further information about statistics in this publication and the availability of related unpublished statistics, contact John Alexander on Brisbane (07) 222 6215 or any ABS office.*
- *for information about other ABS statistics and services, refer to the back page of this publication.*

**MONTHLY ROOM NIGHTS AVAILABLE AND OCCUPIED:
HOTELS, MOTELS AND GUEST HOUSES,
AUSTRALIA**



**MONTHLY OCCUPANCY RATES,
AUSTRALIA**



**MONTHLY TAKINGS FROM ACCOMMODATION,
AUSTRALIA**

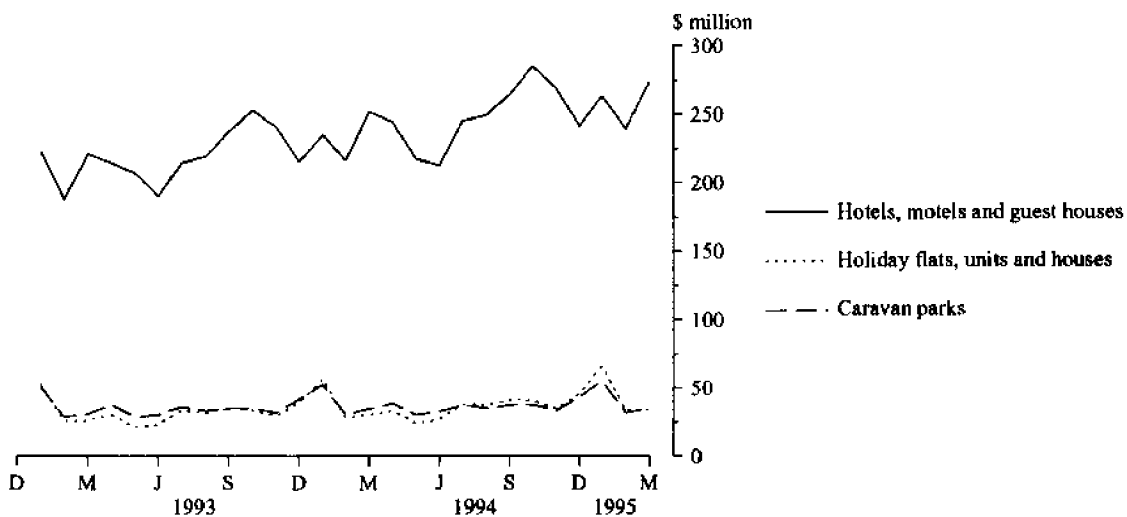


TABLE 1 — SUMMARY OF HOTELS, MOTELS AND GUEST HOUSES WITH FACILITIES, AUSTRALIA (a)

Particulars	Unit	Quarter ended				Year ended			
		December 1993	March 1994	June 1994	September 1994	December 1994	March 1995	March 1994	March 1995
LICENSED HOTELS WITH FACILITIES									
Establishments	No.	1,138	1,131	1,139	1,132	1,135	1,128
Guest rooms	No.	66,517	66,386	66,443	66,524	66,898	67,123
Bed spaces	No.	175,476	175,508	176,344	177,606	179,221	178,802
Employment (persons)	No.	65,735	65,257	64,744	66,323	67,737	67,002
Room nights occupied	'000	3,725.3	3,647.9	3,491.7	3,849.5	4,046.4	3,870.7	13,946.2	15,258.2
Room occupancy rate	per cent	61.0	61.1	57.7	63.0	65.8	64.2	57.6	62.7
Guest nights	'000	6,261.5	6,145.9	5,724.2	6,505.2	6,729.7	6,467.7	23,273.6	25,426.7
Bed occupancy rate	per cent	39.0	38.9	35.7	39.9	40.8	40.2	36.5	39.2
Guest arrivals	'000	2,715.2	2,673.6	2,454.6	2,802.3	2,924.1	2,750.7	10,033.5	10,931.8
Average length of stay	days	2.3	2.3	2.3	2.3	2.3	2.4	2.3	2.3
Takings from accommodation	\$'000	391,787	385,605	362,964	409,128	450,458	434,823	1,437,820	1,657,374
MOTELS AND GUEST HOUSES WITH FACILITIES									
Establishments	No.	3,694	3,684	3,700	3,674	3,684	3,689
Guest rooms	No.	100,226	99,876	100,227	99,883	100,065	100,254
Bed spaces	No.	302,890	302,063	303,246	301,775	303,251	303,641
Employment (persons)	No.	36,843	36,616	36,911	37,697	37,495	37,206
Room nights occupied	'000	4,777.8	4,707.0	4,705.3	5,075.3	5,004.8	4,875.7	18,979.0	19,661.1
Room occupancy rate	per cent	51.9	52.4	51.6	55.3	54.4	54.1	51.9	53.9
Guest nights	'000	8,755.5	8,815.4	8,485.2	9,305.9	9,127.2	9,001.3	34,813.9	35,919.5
Bed occupancy rate	per cent	31.5	32.5	30.8	33.5	32.7	33.0	31.5	32.5
Guest arrivals	'000	4,712.8	4,641.1	4,588.1	5,042.6	4,897.4	4,732.2	18,651.2	19,260.3
Average length of stay	days	1.9	1.9	1.8	1.8	1.9	1.9	1.9	1.9
Takings from accommodation	\$'000	317,754	318,309	311,549	350,767	346,451	341,838	1,259,727	1,350,604
TOTAL HOTELS, MOTELS AND GUEST HOUSES WITH FACILITIES									
Establishments	No.	4,832	4,815	4,839	4,806	4,819	4,817
Guest rooms	No.	166,743	166,262	166,670	166,407	166,963	167,377
Bed spaces	No.	478,366	477,571	479,590	479,381	482,472	482,443
Employment (persons)	No.	102,578	101,873	101,655	104,020	105,232	104,208
Room nights occupied	'000	8,503.1	8,355.0	8,196.9	8,924.8	9,051.2	8,746.4	32,925.2	34,919.3
Room occupancy rate	per cent	55.5	55.9	54.1	58.4	59.0	58.1	54.2	57.4
Guest nights	'000	15,017.0	14,961.3	14,209.4	15,811.0	15,856.9	15,468.9	58,087.5	61,346.2
Bed occupancy rate	per cent	34.2	34.8	32.6	35.9	35.8	35.7	33.3	35.0
Guest arrivals	'000	7,428.1	7,314.7	7,042.7	7,844.9	7,821.5	7,483.0	28,684.7	30,192.2
Average length of stay	days	2.0	2.0	2.0	2.0	2.0	2.1	2.0	2.0
Takings from accommodation	\$'000	709,542	703,914	674,513	759,895	796,910	776,661	2,697,546	3,007,978

(a) From December quarter 1993, establishments with fewer than 5 rooms have been excluded from the scope of this collection. See Explanatory Note 2 (page 20).

TABLE 2 — SUMMARY OF CARAVAN PARKS, AUSTRALIA

Particulars	Unit	Quarter ended				Year ended		March 1994	March 1995
		December 1993	March 1994	June 1994	September 1994	December 1994	March 1995		
SHORT-TERM CARAVAN PARKS									
Establishments	No.	1,621	1,621	1,627	1,665	1,659	1,653
Capacity									
On-site vans	No.	8,856	8,846	8,778	8,862	8,901	8,795
Other powered sites	No.	118,829	119,046	119,565	120,654	120,506	120,517
Unpowered sites	No.	52,415	51,861	51,258	52,132	51,716	51,605
Cabins, etc.	No.	8,834	8,966	9,080	9,401	9,651	9,638
Total capacity	No.	188,934	188,719	188,681	191,049	190,774	190,555
Sites occupied by long-term guests	No.	9,262	9,386	9,550	9,684	9,575	9,730
Other sites permanently reserved	No.	41,330	41,954	41,594	41,829	42,251	43,066
Employment (persons)	No.	5,867	5,813	5,704	5,890	6,248	6,132
Site nights occupied	'000	6,709.4	7,251.0	6,725.7	7,030.6	6,899.8	7,432.6	26,745.8	28,088.6
Site occupancy rate	per cent	38.8	42.7	39.3	40.1	39.3	43.4	39.3	40.5
Takings from accommodation	\$'000	61,678	69,484	53,625	60,551	66,364	73,499	236,353	254,038
LONG-TERM CARAVAN PARKS									
Establishments	No.	1,083	1,080	1,075	1,056	1,057	1,053
Capacity									
On-site vans	No.	12,103	12,221	12,096	11,951	11,988	12,068
Other powered sites	No.	64,271	63,932	63,685	62,543	62,932	62,607
Unpowered sites	No.	16,855	16,428	16,529	16,080	16,130	16,051
Cabins, etc.	No.	6,137	6,278	6,528	6,520	6,595	6,698
Total capacity	No.	99,366	98,859	98,838	97,094	97,645	97,424
Sites occupied by long-term guests	No.	38,065	38,205	38,485	38,174	37,584	37,487
Other sites permanently reserved	No.	2,474	2,511	2,491	2,234	2,177	2,129
Employment (persons)	No.	3,827	3,845	3,769	3,735	3,752	3,785
Site nights occupied	'000	4,486.9	4,449.1	4,530.3	4,621.8	4,422.1	4,333.5	18,562.3	17,907.7
Site occupancy rate	per cent	49.1	50.0	50.4	51.7	49.2	49.5	50.4	50.2
Takings from accommodation	\$'000	46,827	47,613	47,240	49,286	47,617	48,052	190,594	192,195
TOTAL CARAVAN PARKS									
Establishments	No.	2,704	2,701	2,702	2,721	2,716	2,706
Capacity									
On-site vans	No.	20,959	21,067	20,874	20,813	20,889	20,863
Other powered sites	No.	183,100	182,978	183,250	183,197	183,438	183,124
Unpowered sites	No.	69,270	68,289	67,787	68,212	67,846	67,656
Cabins, etc.	No.	14,971	15,244	15,608	15,921	16,246	16,336
Total capacity	No.	288,300	287,578	287,519	288,143	288,419	287,979
Sites occupied by long-term guests	No.	47,327	47,591	48,035	47,858	47,159	47,217
Other sites permanently reserved	No.	43,804	44,465	44,085	44,063	44,428	45,195
Employment (persons)	No.	9,694	9,658	9,473	9,625	10,000	9,917
Site nights occupied	'000	11,196.3	11,700.1	11,256.0	11,652.4	11,321.9	11,766.1	45,308.1	45,996.3
Site occupancy rate	per cent	42.4	45.2	43.1	44.0	42.7	45.4	43.2	43.8
Takings from accommodation	\$'000	108,504	117,097	100,865	109,837	113,981	121,550	426,946	446,233

TABLE 3—SUMMARY OF HOLIDAY FLATS, UNITS AND HOUSES, AUSTRALIA

Particulars	Unit	Quarter ended				Year ended			
		December 1993	March 1994	June 1994	September 1994	December 1994	March 1995	March 1994	March 1995
Letting entities	No.	1,493	1,491	1,495	1,510	1,535	1,559
Flats, units and houses									
Single bedroom	No.	7,986	7,848	7,758	7,972	8,141	8,303
Multiple bedroom	No.	27,500	27,562	27,554	28,284	29,393	29,706
Total flats, units and houses	No.	35,486	35,410	35,312	36,256	37,534	38,009
Bed spaces	No.	154,103	154,325	153,381	156,912	163,586	165,704
Employment (persons) (a)	No.	5,155	5,221	5,206	5,363	5,602	5,716
Unit nights occupied	'000	1,663.6	1,781.8	1,447.6	1,899.5	1,814.4	1,922.7	6,558.2	7,084.2
Unit occupancy rate	per cent	51.1	56.1	45.1	57.1	52.6	56.3	51.7	52.9
Unit lettings	'000	312.9	314.6	277.1	324.8	353.8	345.9	1,177.1	1,301.7
Average length of stay	days	5.3	5.7	5.2	5.8	5.1	5.6	5.6	5.4
Takings from accommodation	\$'000	102,697	116,167	84,752	116,042	120,412	133,221	393,904	454,427

(a) Employment numbers exclude real estate agents and their employees.

TABLE 4—SUMMARY OF VISITOR HOSTELS, AUSTRALIA

Particulars	Unit	Quarter ended				Year ended			
		December 1993	March 1994	June 1994	September 1994	December 1994	March 1995	March 1994	March 1995
Establishments	No.	414	426	417	422	433	427
Bed spaces	No.	24,960	25,748	25,061	25,634	26,063	25,660
Employment (persons)	No.	1,508	1,535	1,512	1,538	1,602	1,637
Guest nights	'000	989.3	1,042.9	924.4	1,026.0	1,080.7	1,087.4	3,909.0	4,118.5
Bed occupancy rate	per cent	43.2	45.3	40.6	43.6	45.1	47.1	42.9	44.1
Guest arrivals	'000	364.3	408.6	354.2	379.8	404.6	411.2	1,484.5	1,549.7
Average length of stay	days	2.7	2.6	2.6	2.7	2.7	2.6	2.6	2.7
Takings from accommodation	\$'000	11,694	12,560	11,031	12,425	13,590	13,819	46,244	50,865

**TABLE 5 — HOTELS, MOTELS AND GUEST HOUSES WITH FACILITIES BY STAR GRADING
NEW SOUTH WALES**

Particulars	Licensed hotels with facilities	Motels and guest houses	Star grading					Ungraded	Total
			1	2	3	4	5		
ESTABLISHMENTS, CAPACITY AND EMPLOYMENT									
<i>March quarter 1994—</i>									
Establishments	268	1,452	38	557	739	123	19	244	1,720
Guest rooms	18,531	38,238	564	11,278	21,703	11,712	5,716	5,796	56,769
Bed spaces	46,582	117,503	1,427	35,088	65,690	33,287	12,522	16,071	164,085
Employment (persons)	16,058	14,410	281	4,214	8,534	8,476	5,896	3,067	30,468
<i>March quarter 1995—</i>									
Establishments	266	1,448	41	511	809	123	16	214	1,714
Guest rooms	18,836	37,791	737	10,164	23,882	11,925	4,690	5,229	56,627
Bed spaces	48,193	116,454	2,015	31,374	72,426	33,452	11,065	14,315	164,647
Employment (persons)	16,574	14,473	490	3,999	9,550	9,328	4,561	3,119	31,047
ROOM NIGHTS OCCUPIED ('000)									
<i>March quarter 1994</i>	<i>1,061.4</i>	<i>1,821.4</i>	<i>20.1</i>	<i>441.6</i>	<i>1,089.2</i>	<i>750.4</i>	<i>378.1</i>	<i>203.3</i>	<i>2,882.8</i>
<i>1995—</i>									
January	356.1	664.0	8.5	151.6	429.5	261.0	102.3	67.2	1,020.1
February	380.1	548.3	7.4	117.1	364.5	266.1	108.6	64.7	928.4
March	408.8	635.0	8.4	137.9	425.3	291.7	110.7	69.6	1,043.8
<i>March quarter 1995</i>	<i>1,144.9</i>	<i>1,847.3</i>	<i>24.2</i>	<i>406.6</i>	<i>1,219.3</i>	<i>818.9</i>	<i>321.7</i>	<i>201.6</i>	<i>2,992.3</i>
ROOM OCCUPANCY RATES (per cent)									
<i>March quarter 1994</i>	<i>63.7</i>	<i>53.0</i>	<i>39.6</i>	<i>43.5</i>	<i>55.8</i>	<i>71.2</i>	<i>73.5</i>	<i>39.2</i>	<i>56.5</i>
<i>1995—</i>									
January	61.0	56.8	37.2	48.2	58.1	70.6	70.4	41.8	58.2
February	72.2	51.9	35.7	41.1	54.5	79.9	82.7	44.5	58.6
March	70.3	54.2	36.7	43.8	57.5	79.3	76.2	43.3	59.6
<i>March quarter 1995</i>	<i>67.7</i>	<i>54.4</i>	<i>36.5</i>	<i>44.5</i>	<i>56.8</i>	<i>76.5</i>	<i>76.2</i>	<i>43.2</i>	<i>58.8</i>
GUEST NIGHTS ('000)									
<i>March quarter 1994</i>	<i>1,708.5</i>	<i>3,465.2</i>	<i>32.6</i>	<i>832.5</i>	<i>2,043.0</i>	<i>1,292.7</i>	<i>628.1</i>	<i>344.8</i>	<i>5,173.6</i>
<i>1995—</i>									
January	607.9	1,426.3	14.8	315.5	912.4	501.3	170.2	119.9	2,034.1
February	593.9	956.8	11.6	203.4	621.5	437.7	172.1	104.4	1,550.8
March	629.5	1,106.8	13.2	240.8	726.9	472.1	175.7	107.7	1,736.3
<i>March quarter 1995</i>	<i>1,831.2</i>	<i>3,489.9</i>	<i>39.6</i>	<i>759.7</i>	<i>2,260.7</i>	<i>1,411.2</i>	<i>517.9</i>	<i>332.0</i>	<i>5,321.1</i>
BED OCCUPANCY RATES (per cent)									
<i>March quarter 1994</i>	<i>40.8</i>	<i>32.8</i>	<i>25.4</i>	<i>26.4</i>	<i>34.6</i>	<i>43.2</i>	<i>55.7</i>	<i>24.0</i>	<i>35.1</i>
<i>1995—</i>									
January	40.7	39.6	23.7	32.6	40.7	48.3	49.6	27.3	39.9
February	44.1	29.4	20.6	23.2	30.7	46.9	55.5	26.2	33.7
March	42.4	30.7	21.1	24.8	32.4	45.8	51.2	24.5	34.1
<i>March quarter 1995</i>	<i>42.4</i>	<i>33.3</i>	<i>21.9</i>	<i>26.9</i>	<i>34.7</i>	<i>47.0</i>	<i>52.0</i>	<i>26.0</i>	<i>36.0</i>
GUEST ARRIVALS ('000)									
<i>March quarter 1994</i>	<i>809.7</i>	<i>1,933.3</i>	<i>18.6</i>	<i>510.2</i>	<i>1,170.3</i>	<i>602.6</i>	<i>261.0</i>	<i>180.4</i>	<i>2,743.0</i>
<i>1995—</i>									
January	265.8	770.8	8.5	191.2	500.0	205.9	75.0	55.9	1,036.6
February	271.1	540.2	6.6	124.4	354.6	198.3	79.6	47.8	811.3
March	287.1	633.7	7.3	148.0	423.6	207.0	82.0	52.8	920.7
<i>March quarter 1995</i>	<i>824.0</i>	<i>1,944.6</i>	<i>22.4</i>	<i>463.7</i>	<i>1,278.2</i>	<i>611.2</i>	<i>236.6</i>	<i>156.5</i>	<i>2,768.6</i>
AVERAGE LENGTH OF STAY (days)									
<i>March quarter 1994</i>	<i>2.1</i>	<i>1.8</i>	<i>1.8</i>	<i>1.6</i>	<i>1.7</i>	<i>2.1</i>	<i>2.4</i>	<i>1.9</i>	<i>1.9</i>
<i>March quarter 1995</i>	<i>2.2</i>	<i>1.8</i>	<i>1.8</i>	<i>1.6</i>	<i>1.8</i>	<i>2.3</i>	<i>2.2</i>	<i>2.1</i>	<i>1.9</i>
TAKINGS FROM ACCOMMODATION (\$'000)									
<i>March quarter 1994</i>	<i>118,245</i>	<i>131,829</i>	<i>883</i>	<i>22,910</i>	<i>75,988</i>	<i>77,683</i>	<i>57,033</i>	<i>15,557</i>	<i>250,074</i>
<i>1995—</i>									
January	41,255	51,841	434	8,484	33,037	28,528	16,122	6,492	93,096
February	47,527	40,042	355	5,845	26,390	29,563	18,671	6,745	87,569
March	50,479	45,756	381	6,931	30,677	31,736	19,324	7,186	96,235
<i>March quarter 1995</i>	<i>139,260</i>	<i>137,639</i>	<i>1,169</i>	<i>21,260</i>	<i>90,104</i>	<i>89,826</i>	<i>54,117</i>	<i>20,422</i>	<i>276,899</i>

TABLE 5—HOTELS, MOTELS AND GUEST HOUSES WITH FACILITIES BY STAR GRADING—continued
VICTORIA

Particulars	Licensed hotels with facilities	Motels and guest houses	Star grading					Ungraded	Total
			1	2	3	4	5		
ESTABLISHMENTS, CAPACITY AND EMPLOYMENT									
<i>March quarter 1994—</i>									
Establishments	196	821	23	385	453	66	8	82	1,017
Guest rooms	10,152	19,836	275	7,456	12,135	5,893	2,653	1,576	29,988
Bed spaces	24,772	57,909	720	21,208	35,966	14,769	5,524	4,494	82,681
Employment (persons)	9,908	6,585	278	3,382	4,498	4,114	3,262	959	16,493
<i>March quarter 1995—</i>									
Establishments	187	816	18	377	480	73	9	46	1,003
Guest rooms	10,121	19,850	237	7,172	12,715	6,151	2,708	988	29,971
Bed spaces	24,557	58,023	626	20,391	37,654	15,435	5,670	2,804	82,580
Employment (persons)	9,795	6,619	224	3,290	4,788	4,257	3,255	600	16,414
ROOM NIGHTS OCCUPIED ('000)									
<i>March quarter 1994</i>	535.2	837.5	4.9	252.6	553.7	348.7	167.5	45.3	1,372.7
<i>1995—</i>									
January	175.8	303.7	1.5	95.0	205.2	113.3	55.9	8.7	479.5
February	198.3	274.7	1.2	76.2	188.7	134.2	62.5	10.3	473.0
March	225.4	329.0	1.6	92.6	225.7	153.2	69.6	11.7	554.4
<i>March quarter 1995</i>	599.5	907.4	4.2	263.8	619.6	400.7	188.0	30.6	1,506.9
ROOM OCCUPANCY RATES (per cent)									
<i>March quarter 1994</i>	58.6	46.9	19.7	37.7	50.7	65.7	70.2	31.9	50.9
<i>1995—</i>									
January	56.0	49.4	20.1	42.7	52.1	59.4	66.6	28.2	51.6
February	70.0	49.4	17.7	37.9	53.0	78.0	82.4	37.1	56.4
March	71.9	53.5	21.5	41.7	57.3	80.5	82.9	38.2	59.7
<i>March quarter 1995</i>	65.9	50.8	19.9	40.9	54.2	72.5	77.1	34.4	55.9
GUEST NIGHTS ('000)									
<i>March quarter 1994</i>	833.7	1,509.5	7.1	469.8	991.1	551.7	244.7	78.7	2,343.2
<i>1995—</i>									
January	304.3	595.1	2.3	189.4	401.1	203.3	85.9	17.3	899.4
February	302.8	455.8	1.7	132.1	311.8	204.8	90.1	18.1	758.6
March	338.4	552.8	2.3	163.7	377.7	228.3	99.0	20.2	891.1
<i>March quarter 1995</i>	945.5	1,603.7	6.2	485.3	1,090.6	636.3	275.1	55.6	2,549.1
BED OCCUPANCY RATES (per cent)									
<i>March quarter 1994</i>	37.4	29.0	11.0	24.6	30.6	41.5	49.2	19.5	31.5
<i>1995—</i>									
January	40.0	33.1	11.9	30.0	34.4	42.5	48.9	20.0	35.1
February	44.1	28.1	9.4	23.1	29.6	47.5	56.8	23.0	32.8
March	44.5	30.7	11.7	25.9	32.4	47.8	56.3	23.2	34.8
<i>March quarter 1995</i>	42.8	30.7	11.1	26.4	32.2	45.9	53.9	22.0	34.3
GUEST ARRIVALS ('000)									
<i>March quarter 1994</i>	375.0	879.7	4.7	280.7	579.9	249.0	100.7	39.7	1,254.7
<i>1995—</i>									
January	130.7	328.9	1.5	104.5	224.1	91.4	30.6	7.7	459.6
February	142.7	264.2	1.1	74.9	179.5	103.5	38.3	9.5	406.8
March	162.2	321.3	1.5	89.9	217.7	122.9	41.1	10.4	483.5
<i>March quarter 1995</i>	435.6	914.4	4.2	269.2	621.3	317.7	110.1	27.6	1,350.0
AVERAGE LENGTH OF STAY (days)									
<i>March quarter 1994</i>	2.2	1.7	1.5	1.7	1.7	2.2	2.4	2.0	1.9
<i>March quarter 1995</i>	2.2	1.8	1.5	1.8	1.8	2.0	2.5	2.0	1.9
TAKINGS FROM ACCOMMODATION (\$'000)									
<i>March quarter 1994</i>	59,753	55,701	157	12,845	37,255	37,560	24,696	2,940	115,454
<i>1995—</i>									
January	19,468	21,255	49	5,202	14,622	12,080	8,219	551	40,722
February	22,991	19,001	34	3,867	13,060	14,896	9,470	664	41,991
March	26,470	22,717	47	4,670	15,581	17,227	10,816	846	49,186
<i>March quarter 1995</i>	68,928	62,972	129	13,739	43,263	44,203	28,505	2,061	131,900

TABLE 5—HOTELS, MOTELS AND GUEST HOUSES WITH FACILITIES BY STAR GRADING—*continued*
QUEENSLAND

Particulars	Licensed hotels with facilities	Motels and guest houses	Star grading					Ungraded	Total
			1	2	3	4	5		
ESTABLISHMENTS, CAPACITY AND EMPLOYMENT									
<i>March quarter 1994—</i>									
Establishments	258	835	17	455	404	54	18	145	1,093
Guest rooms	17,914	22,148	277	8,547	15,328	7,829	5,533	2,548	40,062
Bed spaces	53,344	68,414	809	25,766	46,893	24,665	16,188	7,437	121,758
Employment (persons)	20,456	8,310	126	3,739	7,910	6,078	9,097	1,816	28,766
<i>March quarter 1995</i>									
Establishments	266	840	15	417	420	55	15	184	1,106
Guest rooms	18,425	22,552	228	7,546	15,958	8,339	4,350	4,556	40,977
Bed spaces	54,986	69,720	573	22,783	48,878	27,003	12,642	12,827	124,706
Employment (persons)	21,260	8,469	99	3,322	8,346	8,757	6,068	3,137	29,729
ROOM NIGHTS OCCUPIED ('000)									
<i>March quarter 1994</i>	1,028.5	1,112.3	8.6	364.0	314.0	468.5	380.4	105.3	2,140.8
<i>1995—</i>									
January	376.8	402.1	3.0	118.7	304.7	176.7	101.1	74.7	778.9
February	320.4	338.6	2.3	93.0	257.7	152.7	95.6	57.7	659.0
March	360.9	389.7	2.2	106.9	300.3	170.7	103.3	67.1	750.6
<i>March quarter 1995</i>	1,058.0	1,130.4	7.5	318.6	862.6	500.1	300.1	199.5	2,188.4
ROOM OCCUPANCY RATES (per cent)									
<i>March quarter 1994</i>	63.8	55.9	34.3	47.5	59.0	66.5	76.4	46.0	59.4
<i>1995—</i>									
January	66.0	57.6	42.8	50.8	61.6	68.6	75.0	53.1	61.4
February	62.1	53.7	35.8	44.1	57.7	65.6	78.5	45.4	57.5
March	63.3	55.8	35.8	45.8	60.7	66.0	76.6	47.6	59.2
<i>March quarter 1995</i>	63.9	55.8	38.3	47.0	60.1	66.8	76.6	48.8	59.4
GUEST NIGHTS ('000)									
<i>March quarter 1994</i>	1,943.9	2,123.1	14.5	670.7	1,559.1	933.6	684.5	204.6	4,067.0
<i>1995—</i>									
January	771.1	839.7	5.2	238.9	640.9	373.6	199.5	152.7	1,610.8
February	573.7	589.2	3.4	158.3	449.5	270.5	174.1	106.9	1,162.9
March	639.1	670.7	3.7	180.4	522.8	306.2	177.0	119.7	1,309.8
<i>March quarter 1995</i>	1,983.9	2,099.6	12.2	577.7	1,613.3	950.3	550.6	379.3	4,083.5
BED OCCUPANCY RATES (per cent)									
<i>March quarter 1994</i>	40.5	34.5	19.9	29.0	36.9	42.1	47.0	30.6	37.2
<i>1995—</i>									
January	45.2	38.9	29.0	33.8	42.3	44.8	50.9	38.5	41.7
February	37.3	30.2	21.3	24.9	32.9	35.9	49.2	29.8	33.3
March	37.5	31.1	22.4	25.6	34.5	36.6	45.2	30.1	33.9
<i>March quarter 1995</i>	40.1	33.5	24.4	28.2	36.7	39.2	48.4	32.9	36.4
GUEST ARRIVALS ('000)									
<i>March quarter 1994</i>	686.6	990.5	6.9	371.5	661.1	354.2	218.6	64.8	1,677.1
<i>1995—</i>									
January	238.6	376.8	2.2	125.2	260.7	121.5	55.8	49.9	615.4
February	210.2	286.3	1.5	88.2	203.6	108.0	56.7	38.6	496.5
March	235.6	321.8	1.3	99.9	229.9	120.4	60.7	45.2	557.4
<i>March quarter 1995</i>	684.4	984.9	5.0	313.4	694.2	349.9	173.2	133.7	1,669.4
AVERAGE LENGTH OF STAY (days)									
<i>March quarter 1994</i>	2.8	2.1	2.1	1.8	2.4	2.6	3.1	3.2	2.4
<i>March quarter 1995</i>	2.9	2.1	2.5	1.8	2.3	2.7	3.2	2.8	2.4
TAKINGS FROM ACCOMMODATION (\$'000)									
<i>March quarter 1994</i>	119,446	71,158	514	16,734	59,763	47,698	59,291	6,604	190,605
<i>1995—</i>									
January	48,260	27,543	139	6,292	24,182	20,659	18,295	6,235	75,803
February	37,768	21,863	86	4,379	18,565	16,568	15,567	4,468	59,632
March	43,373	25,229	77	5,069	21,901	18,747	17,643	5,163	68,601
<i>March quarter 1995</i>	129,401	74,635	302	15,741	64,648	55,974	51,505	15,866	204,036

TABLE 5 — HOTELS, MOTELS AND GUEST HOUSES WITH FACILITIES BY STAR GRADING—continued
SOUTH AUSTRALIA

Particulars	Licensed hotels with facilities	Motels and guest houses	Star grading					Ungraded	Total
			1	2	3	4	5		
ESTABLISHMENTS, CAPACITY AND EMPLOYMENT									
<i>March quarter 1994—</i>									
Establishments	113	229	11	149	137	17	3	25	342
Guest rooms	4,453	6,172	142	3,318	4,669	1,119	1,081	296	10,625
Bed spaces	10,913	18,963	302	9,363	13,820	3,444	2,162	785	29,876
Employment (persons)	4,928	2,400	199	2,045	2,546	1,012	952	574	7,328
<i>March quarter 1995—</i>									
Establishments	115	227	13	144	141	18	3	23	342
Guest rooms	4,279	6,324	158	3,029	4,780	1,244	1,081	311	10,603
Bed spaces	10,559	19,318	342	8,497	14,075	3,919	2,186	858	29,877
Employment (persons)	5,296	2,544	211	2,054	2,833	1,141	1,034	567	7,840
ROOM NIGHTS OCCUPIED ('000)									
<i>March quarter 1994</i>	201.1	276.7	2.8	110.7	220.8	71.1	63.1	9.2	477.8
<i>1995</i>									
January	67.5	111.6	1.4	40.8	82.9	28.9	21.2	4.0	179.1
February	63.0	91.6	1.3	31.3	71.3	27.4	20.2	3.1	154.7
March	71.8	104.1	1.4	35.9	81.7	29.0	24.3	3.7	175.9
<i>March quarter 1995</i>	202.4	307.3	4.1	108.0	235.9	85.3	65.6	10.8	509.7
ROOM OCCUPANCY RATES (per cent)									
<i>March quarter 1994</i>	50.3	49.8	22.1	37.2	52.6	70.6	64.9	34.7	50.0
<i>1995—</i>									
January	50.9	56.9	28.0	43.4	55.9	75.0	63.2	41.1	54.5
February	52.6	51.8	29.5	37.0	53.3	78.6	66.7	35.8	52.1
March	54.2	53.1	29.2	38.2	55.1	75.2	72.4	38.3	53.5
<i>March quarter 1995</i>	52.6	54.0	28.9	39.6	54.8	76.2	67.5	38.5	53.4
GUEST NIGHTS ('000)									
<i>March quarter 1994</i>	309.6	503.5	3.9	199.3	389.1	118.5	89.6	12.8	813.1
<i>1995—</i>									
January	110.7	229.0	1.9	80.7	164.6	54.2	30.8	7.4	339.7
February	89.7	152.3	1.8	52.1	113.7	42.8	26.8	4.8	242.0
March	101.8	173.1	2.0	60.4	129.6	45.2	32.1	5.5	274.9
<i>March quarter 1995</i>	302.2	554.3	5.8	193.2	407.9	142.3	89.7	17.6	856.5
BED OCCUPANCY RATES (per cent)									
<i>March quarter 1994</i>	31.6	29.5	14.5	23.7	31.3	38.2	46.1	18.1	30.3
<i>1995</i>									
January	33.8	38.2	18.3	30.6	37.7	44.6	45.5	27.7	36.7
February	30.3	28.2	18.8	21.9	28.9	39.0	43.7	19.9	28.9
March	31.1	28.9	19.3	22.9	29.7	37.2	47.3	20.7	29.7
<i>March quarter 1995</i>	31.8	31.9	18.8	25.3	32.2	40.3	45.6	22.9	31.9
GUEST ARRIVALS ('000)									
<i>March quarter 1994</i>	160.3	277.1	2.3	117.5	208.7	62.4	40.9	5.7	437.4
<i>1995—</i>									
January	48.8	123.7	0.9	45.9	85.9	25.8	9.8	4.2	172.5
February	44.2	87.1	0.9	30.4	62.9	22.3	12.1	2.7	131.3
March	51.5	100.3	1.0	36.4	73.9	23.4	13.9	3.2	151.8
<i>March quarter 1995</i>	144.5	311.1	2.7	112.7	222.8	71.5	35.9	10.0	455.6
AVERAGE LENGTH OF STAY (days)									
<i>March quarter 1994</i>	1.9	1.8	1.7	1.7	1.9	1.9	2.2	2.3	1.9
<i>March quarter 1995</i>	2.1	1.8	2.1	1.7	1.8	2.0	2.5	1.8	1.9
TAKINGS FROM ACCOMMODATION (\$'000)									
<i>March quarter 1994</i>	17,328	17,679	85	4,993	14,689	7,158	7,654	427	35,007
<i>1995</i>									
January	5,576	7,530	43	1,949	5,673	2,864	2,409	167	13,105
February	5,488	6,112	40	1,405	4,754	2,742	2,538	122	11,600
March	6,422	6,769	46	1,631	5,308	2,955	3,097	154	13,191
<i>March quarter 1995</i>	17,486	20,411	130	4,986	15,734	8,561	8,043	443	37,897

TABLE 5—HOTELS, MOTELS AND GUEST HOUSES WITH FACILITIES BY STAR GRADING—continued
WESTERN AUSTRALIA

Particulars	Licensed hotels with facilities	Motels and guest houses	Star grading					Ungraded	Total
			1	2	3	4	5		
ESTABLISHMENTS, CAPACITY AND EMPLOYMENT									
<i>March quarter 1994—</i>									
Establishments	162	168	10	125	112	9	9	65	330
Guest rooms	8,189	6,531	166	3,608	6,069	877	2,424	1,576	14,720
Bed spaces	19,893	18,312	369	9,135	16,665	2,296	6,031	3,709	38,205
Employment (persons)	7,044	2,550	144	1,742	3,036	1,191	2,495	986	9,594
<i>March quarter 1995</i>									
Establishments	159	176	12	133	108	12	8	62	335
Guest rooms	8,222	6,520	218	3,750	5,907	948	2,373	1,546	14,742
Bed spaces	20,240	18,222	424	9,474	16,335	2,475	5,894	3,860	38,462
Employment (persons)	7,077	2,536	155	2,024	2,765	1,234	2,451	984	9,613
ROOM NIGHTS OCCUPIED ('000)									
<i>March quarter 1994</i>	422.9	330.8	4.8	149.9	316.2	63.0	165.4	54.4	753.7
<i>1995—</i>									
January	144.4	118.7	1.6	58.7	110.8	21.3	52.4	18.3	263.1
February	144.6	100.4	1.4	51.6	97.9	22.7	55.7	15.7	245.0
March	160.8	115.3	1.6	59.1	111.8	25.2	59.3	19.1	276.1
<i>March quarter 1995</i>	449.8	334.4	4.5	169.4	320.5	69.2	167.5	53.1	784.2
ROOM OCCUPANCY RATES (per cent)									
<i>March quarter 1994</i>	57.5	56.3	31.9	46.2	57.9	79.8	75.8	38.8	57.0
<i>1995—</i>									
January	56.7	59.2	23.9	50.5	60.5	72.5	71.3	39.5	57.8
February	62.8	55.2	22.4	49.1	59.2	85.5	83.9	37.0	59.5
March	63.1	57.1	23.1	50.9	61.0	85.8	80.6	40.1	60.4
<i>March quarter 1995</i>	60.8	57.2	23.2	50.2	60.3	81.2	78.4	38.9	59.2
GUEST NIGHTS ('000)									
<i>March quarter 1994</i>	664.5	623.5	7.6	255.3	573.5	99.1	267.7	84.8	1,288.0
<i>1995—</i>									
January	247.1	241.4	2.3	109.1	219.7	36.8	88.1	32.5	488.5
February	216.2	172.4	1.8	81.9	162.9	34.4	83.6	24.1	388.7
March	243.2	197.3	2.1	93.8	187.6	37.6	90.1	29.5	440.5
<i>March quarter 1995</i>	706.5	611.2	6.2	284.7	570.2	108.8	261.8	86.1	1,317.7
BED OCCUPANCY RATES (per cent)									
<i>March quarter 1994</i>	37.2	37.9	23.0	31.0	38.3	47.9	49.3	25.7	37.5
<i>1995—</i>									
January	39.4	43.2	17.4	37.1	43.4	47.9	48.2	28.5	41.2
February	38.2	34.0	15.1	30.9	35.6	49.6	50.6	23.1	36.2
March	38.8	35.0	15.8	31.9	37.0	49.0	49.3	24.9	37.0
<i>March quarter 1995</i>	38.8	37.5	16.2	33.4	38.8	48.8	49.4	25.6	38.2
GUEST ARRIVALS ('000)									
<i>March quarter 1994</i>	263.8	253.1	3.9	122.6	219.1	32.4	105.3	33.6	516.8
<i>1995—</i>									
January	95.5	96.4	1.2	51.7	77.7	11.0	36.7	13.6	191.9
February	85.6	70.2	0.8	38.3	60.0	10.8	35.7	10.3	155.8
March	97.2	81.3	1.0	44.2	68.7	12.7	39.5	12.4	178.4
<i>March quarter 1995</i>	278.3	247.9	3.0	134.2	206.4	34.5	111.9	36.3	526.2
AVERAGE LENGTH OF STAY (days)									
<i>March quarter 1994</i>	2.5	2.5	2.0	2.1	2.6	3.1	2.5	2.5	2.5
<i>March quarter 1995</i>	2.5	2.5	2.1	2.1	2.8	3.2	2.3	2.4	2.5
TAKINGS FROM ACCOMMODATION (\$'000)									
<i>March quarter 1994</i>	36,901	20,976	163	7,490	21,106	6,362	19,407	2,449	56,977
<i>1995—</i>									
January	13,134	8,255	47	3,263	7,990	2,337	6,744	1,008	21,389
February	13,558	6,632	36	2,753	6,789	2,472	7,344	796	20,190
March	13,105	7,721	42	3,161	7,847	2,842	7,879	1,054	22,826
<i>March quarter 1995</i>	41,797	22,609	125	9,177	22,627	7,651	21,967	2,858	64,405

TABLE 5 — HOTELS, MOTELS AND GUEST HOUSES WITH FACILITIES BY STAR GRADING—*continued*
TASMANIA

Particulars	Licensed hotels with facilities	Motels and guest houses	Star grading			Total
			1, 2 and ungraded	3	4 and 5	
ESTABLISHMENTS, CAPACITY AND EMPLOYMENT						
<i>March quarter 1994—</i>						
Establishments	92	86	77	79	22	178
Guest rooms	3,489	1,845	1,421	2,464	1,449	5,334
Bed spaces	9,993	5,665	4,069	7,449	4,140	15,658
Employment (persons)	3,587	754	1,059	1,351	1,931	4,341
<i>March quarter 1995—</i>						
Establishments	91	86	72	82	23	177
Guest rooms	3,511	1,869	1,332	2,570	1,478	5,380
Bed spaces	9,908	5,780	3,761	7,669	4,258	15,688
Employment (persons)	3,500	856	970	1,337	2,049	4,356
ROOM NIGHTS OCCUPIED ('000)						
<i>March quarter 1994</i>	205.9	112.1	72.6	144.1	101.3	318.0
<i>1995—</i>						
January	64.3	38.8	21.2	49.2	32.7	103.1
February	66.6	37.7	20.8	50.1	33.4	104.3
March	78.9	44.0	24.3	58.6	40.0	122.9
<i>March quarter 1995</i>	209.8	120.5	66.2	157.9	106.2	330.3
ROOM OCCUPANCY RATES (per cent)						
<i>March quarter 1994</i>	65.6	67.5	56.8	65.0	77.7	66.2
<i>1995</i>						
January	59.1	66.9	51.2	61.7	71.5	61.8
February	67.8	72.0	55.7	69.6	80.8	69.2
March	72.5	76.0	58.9	73.5	87.4	73.7
<i>March quarter 1995</i>	66.4	71.6	55.2	68.3	79.8	68.2
GUEST NIGHTS ('000)						
<i>March quarter 1994</i>	370.7	219.2	139.5	281.6	168.8	589.9
<i>1995—</i>						
January	126.3	80.6	42.7	101.9	62.4	206.9
February	111.0	72.2	37.8	92.7	52.7	183.2
March	130.4	82.8	43.5	105.6	64.1	213.2
<i>March quarter 1995</i>	367.6	235.6	124.0	300.2	179.1	603.3
BED OCCUPANCY RATES (per cent)						
<i>March quarter 1994</i>	41.2	43.0	38.1	42.0	45.3	41.9
<i>1995</i>						
January	41.1	45.0	36.6	42.8	47.2	42.5
February	40.0	44.6	35.9	43.2	44.2	41.7
March	42.4	46.2	37.3	44.4	48.5	43.8
<i>March quarter 1995</i>	41.2	45.3	36.6	43.5	46.7	42.7
GUEST ARRIVALS ('000)						
<i>March quarter 1994</i>	201.6	121.9	91.6	155.9	76.0	323.5
<i>1995—</i>						
January	68.7	46.7	27.9	61.5	26.0	115.4
February	63.2	39.9	23.8	53.7	25.5	103.1
March	73.0	48.6	28.9	63.6	29.1	121.6
<i>March quarter 1995</i>	204.9	135.2	80.6	178.9	80.7	340.1
AVERAGE LENGTH OF STAY (days)						
<i>March quarter 1994</i>	1.8	1.8	1.5	1.8	2.2	1.8
<i>March quarter 1995</i>	1.8	1.7	1.5	1.7	2.2	1.8
TAKINGS FROM ACCOMMODATION (\$'000)						
<i>March quarter 1994</i>	15,769	7,044	4,102	9,144	9,567	22,812
<i>1995—</i>						
January	5,321	2,650	1,321	3,335	3,315	7,971
February	5,218	2,494	1,219	3,228	3,266	7,713
March	6,359	2,920	1,421	3,785	4,073	9,279
<i>March quarter 1995</i>	16,898	8,064	3,961	10,348	10,654	24,963

TABLE 5 — HOTELS, MOTELS AND GUEST HOUSES WITH FACILITIES BY STAR GRADING—continued
NORTHERN TERRITORY

Particulars	Licensed hotels with facilities	Motels and guest houses	Star grading					Total
			1	2	3	4 and 5	Ungraded	
ESTABLISHMENTS, CAPACITY AND EMPLOYMENT								
<i>March quarter 1994—</i>								
Establishments	29	64	14	39	20	5	15	93
Guest rooms	1,992	3,287	339	1,846	1,808	987	299	5,279
Bed spaces	5,621	9,478	997	5,215	5,320	2,716	851	15,099
Employment (persons)	1,786	1,014	119	692	824	1,022	143	2,800
<i>March quarter 1995—</i>								
Establishments	30	65	15	38	20	5	17	95
Guest rooms	2,032	3,411	366	1,850	1,805	987	435	5,443
Bed spaces	5,849	10,032	1,085	5,361	5,473	2,710	1,252	15,881
Employment (persons)	2,000	1,120	176	792	882	1,119	151	3,120
ROOM NIGHTS OCCUPIED ('000)								
<i>March quarter 1994</i>	84.4	120.3	9.3	59.7	86.9	39.4	9.4	204.6
<i>1995—</i>								
January	26.9	39.2	3.5	18.7	25.2	12.8	5.8	66.1
February	29.0	38.3	3.2	17.5	27.0	14.6	5.1	67.4
March	37.8	50.4	4.2	22.8	34.9	20.2	6.2	88.2
<i>March quarter 1995</i>	93.8	127.8	10.9	58.9	87.1	47.6	17.1	221.6
ROOM OCCUPANCY RATES (per cent)								
<i>March quarter 1994</i>	47.1	40.7	30.3	35.9	53.4	44.4	35.0	43.1
<i>1995—</i>								
January	42.7	37.2	31.1	32.6	45.4	42.0	42.9	39.3
February	51.1	40.3	31.1	33.7	53.9	52.9	41.9	44.3
March	60.1	47.6	36.6	39.7	62.4	65.9	46.2	52.3
<i>March quarter 1995</i>	51.3	41.8	33.0	35.4	53.9	53.6	43.7	45.3
GUEST NIGHTS ('000)								
<i>March quarter 1994</i>	142.2	200.0	16.3	97.7	149.6	64.4	14.1	342.2
<i>1995—</i>								
January	44.7	75.8	6.6	35.2	47.5	20.0	11.1	120.5
February	45.5	64.9	5.1	28.2	45.8	22.3	9.1	110.4
March	59.5	87.0	6.7	37.0	60.3	30.6	11.8	146.4
<i>March quarter 1995</i>	149.7	227.7	18.4	100.5	153.7	72.9	32.0	377.4
BED OCCUPANCY RATES (per cent)								
<i>March quarter 1994</i>	28.1	23.4	18.2	20.8	31.2	26.4	18.5	25.2
<i>1995—</i>								
January	24.7	24.5	19.7	21.2	28.3	23.8	28.7	24.6
February	27.8	23.2	16.7	18.8	30.1	29.3	25.8	24.9
March	32.8	28.0	20.0	22.3	35.6	36.4	30.3	29.7
<i>March quarter 1995</i>	28.4	25.3	18.9	20.8	31.4	29.9	28.4	26.5
GUEST ARRIVALS ('000)								
<i>March quarter 1994</i>	82.5	104.1	7.6	51.9	73.1	44.7	9.3	186.6
<i>1995—</i>								
January	24.3	35.8	3.4	16.6	23.8	12.3	4.0	60.1
February	24.7	30.1	2.3	13.5	22.1	13.0	4.0	54.8
March	31.9	39.6	3.1	17.2	30.0	16.7	4.4	71.5
<i>March quarter 1995</i>	80.9	105.6	8.8	47.3	75.9	42.0	12.4	186.5
AVERAGE LENGTH OF STAY (days)								
<i>March quarter 1994</i>	1.7	1.9	2.1	1.9	2.0	1.4	1.5	1.8
<i>March quarter 1995</i>	1.9	2.2	2.1	2.1	2.0	1.7	2.6	2.0
TAKINGS FROM ACCOMMODATION (\$'000)								
<i>March quarter 1994</i>	8,171	7,340	366	3,115	6,921	4,652	457	15,510
<i>1995—</i>								
January	2,647	2,623	154	1,053	2,287	1,502	274	5,270
February	2,765	2,496	124	951	2,254	1,688	244	5,261
March	3,880	3,302	174	1,291	2,933	2,413	370	7,182
<i>March quarter 1995</i>	9,292	8,421	453	3,296	7,474	5,602	888	17,713

TABLE 5 — HOTELS, MOTELS AND GUEST HOUSES WITH FACILITIES BY STAR GRADING—continued
AUSTRALIAN CAPITAL TERRITORY

Particulars	Licensed hotels with facilities	Motels and guest houses	Star grading			Total
			1, 2 and ungraded	3	4 and 5	
ESTABLISHMENTS, CAPACITY AND EMPLOYMENT						
<i>March quarter 1994—</i>						
Establishments	13	29	12	23	7	42
Guest rooms	1,666	1,819	612	1,704	1,169	3,485
Bed spaces	4,390	5,819	1,857	5,189	3,163	10,209
Employment (persons)	1,490	593	221	677	1,185	2,083
<i>March quarter 1995—</i>						
Establishments	14	31	12	24	9	45
Guest rooms	1,697	1,937	478	1,908	1,248	3,634
Bed spaces	4,510	6,092	1,645	5,510	3,447	10,602
Employment (persons)	1,500	589	162	780	1,147	2,089
ROOM NIGHTS OCCUPIED ('000)						
<i>March quarter 1994</i>	108.5	96.0	29.6	91.4	83.5	204.5
<i>1995—</i>						
January	33.7	32.6	7.6	32.2	26.6	66.3
February	36.8	31.4	6.1	33.0	29.1	68.2
March	41.9	36.4	7.7	37.8	32.8	78.3
<i>March quarter 1995</i>	112.4	100.5	21.4	103.0	88.5	212.8
ROOM OCCUPANCY RATES (per cent)						
<i>March quarter 1994</i>	72.4	58.6	53.7	59.6	79.3	65.2
<i>1995—</i>						
January	65.1	54.3	53.9	54.4	68.7	59.3
February	78.6	58.0	48.4	61.7	83.4	67.5
March	79.6	60.7	52.0	63.9	84.7	69.5
<i>March quarter 1995</i>	74.3	57.6	51.5	60.0	78.8	65.4
GUEST NIGHTS ('000)						
<i>March quarter 1994</i>	172.9	171.4	51.1	164.6	128.6	344.3
<i>1995—</i>						
January	62.6	68.3	17.3	65.2	48.4	130.9
February	55.7	50.1	10.4	51.9	43.5	105.8
March	62.7	60.9	14.1	60.4	49.1	123.6
<i>March quarter 1995</i>	181.0	179.3	41.8	177.6	140.9	360.3
BED OCCUPANCY RATES (per cent)						
<i>March quarter 1994</i>	43.8	32.7	30.6	35.2	45.2	37.5
<i>1995</i>						
January	45.4	36.2	35.2	38.2	45.3	40.1
February	44.7	29.4	23.5	33.6	45.0	35.8
March	44.8	32.3	27.6	35.4	45.9	37.6
<i>March quarter 1995</i>	45.0	32.7	28.9	35.8	45.4	37.9
GUEST ARRIVALS ('000)						
<i>March quarter 1994</i>	94.0	81.4	19.9	86.2	69.3	175.4
<i>1995—</i>						
January	30.6	32.0	8.1	32.3	22.2	62.6
February	31.8	25.2	4.9	28.9	23.1	57.0
March	35.8	31.4	7.4	34.0	25.7	67.1
<i>March quarter 1995</i>	98.1	88.6	20.4	95.2	71.1	186.7
AVERAGE LENGTH OF STAY (days)						
<i>March quarter 1994</i>	1.8	2.1	2.6	1.9	1.9	2.0
<i>March quarter 1995</i>	1.8	2.0	2.0	1.9	2.0	1.9
TAKINGS FROM ACCOMMODATION (\$'000)						
<i>March quarter 1994</i>	10,892	6,583	1,634	6,894	8,948	17,475
<i>1995</i>						
January	3,386	2,413	471	2,379	2,948	5,799
February	3,788	2,187	406	2,370	3,200	5,976
March	4,587	2,486	509	2,847	3,717	7,073
<i>March quarter 1995</i>	11,761	7,087	1,386	7,596	9,866	18,848

TABLE 5 — HOTELS, MOTELS AND GUEST HOUSES WITH FACILITIES BY STAR GRADING—continued
AUSTRALIA

Particulars	Licensed hotels with facilities	Motels and guest houses	Star grading					Ungraded	Total
			1	2	3	4	5		
ESTABLISHMENTS, CAPACITY AND EMPLOYMENT									
<i>March quarter 1994—</i>									
Establishments	1,131	3,684	114	1,774	1,967	299	61	600	4,815
Guest rooms	66,386	99,876	1,776	37,595	65,880	30,311	18,131	12,569	166,262
Bed spaces	175,508	302,063	4,644	109,840	196,992	86,707	44,200	35,188	477,571
Employment (persons)	65,257	36,616	1,164	16,746	29,376	24,274	22,437	7,876	101,873
<i>March quarter 1995—</i>									
Establishments	1,128	3,689	116	1,680	2,084	313	56	568	4,817
Guest rooms	67,123	100,254	2,048	34,829	69,525	31,591	15,931	13,453	167,377
Bed spaces	178,802	303,641	5,694	101,494	208,020	90,861	39,295	37,079	482,443
Employment (persons)	67,002	37,206	1,373	16,267	31,281	28,248	18,153	8,886	104,208
ROOM NIGHTS OCCUPIED ('000)									
<i>March quarter 1994</i>	3,647.9	4,707.0	50.9	1,456.5	3,316.4	1,884.1	1,196.4	450.7	8,355.0
<i>1995—</i>									
January	1,245.4	1,710.7	21.0	504.3	1,239.6	660.1	346.3	184.8	2,956.2
February	1,238.9	1,461.0	17.4	406.8	1,090.2	666.1	356.8	162.6	2,699.9
March	1,386.3	1,703.9	20.3	479.1	1,276.0	745.5	384.6	184.8	3,090.3
<i>March quarter 1995</i>	3,870.7	4,875.7	58.7	1,390.2	3,603.8	2,071.7	1,087.7	532.2	8,746.4
ROOM OCCUPANCY RATES (per cent)									
<i>March quarter 1994</i>	61.1	52.4	31.9	43.1	56.0	69.1	73.3	40.0	55.9
<i>1995—</i>									
January	59.9	55.2	33.1	46.7	57.5	67.5	70.1	44.8	57.1
February	66.0	52.1	30.4	41.7	56.0	75.4	80.0	43.5	57.7
March	66.8	54.8	32.4	44.4	59.2	76.3	77.9	44.5	59.6
<i>March quarter 1995</i>	64.2	54.1	32.0	44.4	57.6	73.0	75.9	44.3	58.1
GUEST NIGHTS ('000)									
<i>March quarter 1994</i>	6,145.9	8,815.4	82.8	2,663.1	6,151.5	3,294.3	1,977.7	791.9	14,961.3
<i>1995</i>									
January	2,274.7	3,556.2	38.8	1,010.8	2,553.4	1,278.4	596.1	353.4	5,830.9
February	1,988.5	2,513.7	27.6	691.8	1,849.8	1,090.7	564.6	277.7	4,502.2
March	2,204.5	2,931.4	33.3	817.9	2,170.9	1,208.2	598.8	306.8	5,135.8
<i>March quarter 1995</i>	6,467.7	9,001.3	99.6	2,520.6	6,574.1	3,577.3	1,759.5	937.8	15,468.9
BED OCCUPANCY RATES (per cent)									
<i>March quarter 1994</i>	38.9	32.5	19.8	27.0	34.7	42.2	49.7	25.1	34.8
<i>1995—</i>									
January	41.1	37.9	22.0	32.2	39.6	45.4	48.9	31.1	39.0
February	39.8	29.6	17.3	24.4	31.8	43.0	51.3	27.0	33.4
March	39.9	31.2	19.0	26.0	33.7	43.0	49.2	26.8	34.4
<i>March quarter 1995</i>	40.2	33.0	19.5	27.6	35.1	43.8	49.8	28.3	35.7
GUEST ARRIVALS ('000)									
<i>March quarter 1994</i>	2,673.6	4,641.1	44.2	1,535.1	3,154.5	1,457.9	759.0	363.9	7,314.7
<i>1995—</i>									
January	903.1	1,811.0	20.3	560.8	1,266.0	507.9	216.2	142.9	2,714.1
February	873.4	1,343.3	14.2	390.7	965.3	494.8	232.2	119.5	2,216.7
March	974.2	1,577.9	17.4	462.0	1,141.5	546.7	248.5	136.2	2,552.1
<i>March quarter 1995</i>	2,750.7	4,732.2	51.9	1,413.5	3,372.8	1,549.3	696.8	398.6	7,483.0
AVERAGE LENGTH OF STAY (days)									
<i>March quarter 1994</i>	2.3	1.9	1.9	1.7	2.0	2.3	2.6	2.2	2.0
<i>March quarter 1995</i>	2.4	1.9	1.9	1.8	1.9	2.3	2.5	2.4	2.1
TAKINGS FROM ACCOMMODATION (\$'000)									
<i>March quarter 1994</i>	385,605	318,309	2,181	72,040	231,759	194,523	173,207	30,204	703,914
<i>1995—</i>									
January	139,046	124,110	957	27,451	93,504	72,598	53,424	15,221	263,155
February	139,104	100,828	717	20,307	77,409	72,624	55,360	13,514	239,931
March	156,674	116,901	824	24,052	90,880	81,411	61,059	15,349	273,574
<i>March quarter 1995</i>	434,823	341,838	2,498	71,810	261,793	226,632	169,843	44,084	776,661

TABLE 6 — HOLIDAY FLATS, UNITS AND HOUSES BY STATE/TERRITORY, AUSTRALIA

Particulars	New South Wales	Victoria	Queensland	South Australia	Western Australia	Tasmania	Northern Territory	Australian Capital Territory	Australia
LETTING ENTITIES, CAPACITY AND EMPLOYMENT									
<i>March quarter 1994—</i>									
Letting entities	404	210	605	86	107	53	10	16	1,491
Flats, units and houses									
Single bedroom	1,931	1,013	3,497	304	558	265	142	138	7,848
Multiple bedroom	8,458	2,558	12,824	1,017	1,640	532	108	425	27,562
<i>Total flats, units and houses</i>	<i>10,389</i>	<i>3,571</i>	<i>16,321</i>	<i>1,321</i>	<i>2,198</i>	<i>797</i>	<i>250</i>	<i>563</i>	<i>35,410</i>
Bed spaces	48,601	16,120	65,990	6,719	10,249	3,511	1,022	2,113	154,325
Employment (persons) (a)	1,154	702	2,125	275	471	338	50	106	5,221
<i>March quarter 1995—</i>									
Letting entities	415	220	641	90	113	55	8	17	1,559
Flats, units and houses									
Single bedroom	2,057	1,136	3,595	307	616	272	126	194	8,303
Multiple bedroom	8,797	2,608	14,229	1,030	1,798	595	98	551	29,706
<i>Total flats, units and houses</i>	<i>10,854</i>	<i>3,744</i>	<i>17,824</i>	<i>1,337</i>	<i>2,414</i>	<i>867</i>	<i>224</i>	<i>745</i>	<i>38,009</i>
Bed spaces	50,846	16,825	72,628	6,680	11,231	3,761	884	2,849	165,704
Employment (persons) (a)	1,186	779	2,384	251	543	382	48	143	5,716
UNIT NIGHTS OCCUPIED ('000)									
<i>March quarter 1994</i>	<i>483.8</i>	<i>154.1</i>	<i>862.9</i>	<i>60.5</i>	<i>122.7</i>	<i>50.3</i>	<i>14.4</i>	<i>33.1</i>	<i>1,781.8</i>
<i>1995—</i>									
January	244.1	76.7	413.7	28.9	53.8	20.4	4.8	16.8	859.1
February	140.8	45.7	248.0	15.4	38.3	17.0	3.7	15.2	524.0
March	132.8	50.8	257.1	16.0	41.7	19.3	4.8	17.1	539.7
<i>March quarter 1995</i>	<i>517.7</i>	<i>173.1</i>	<i>918.8</i>	<i>60.3</i>	<i>133.8</i>	<i>56.8</i>	<i>13.2</i>	<i>49.1</i>	<i>1,922.7</i>
UNIT OCCUPANCY RATES (per cent)									
<i>March quarter 1994</i>	<i>51.8</i>	<i>49.0</i>	<i>58.8</i>	<i>50.9</i>	<i>62.0</i>	<i>70.1</i>	<i>63.8</i>	<i>65.2</i>	<i>56.1</i>
<i>1995—</i>									
January	72.5	66.1	74.9	69.6	73.1	75.9	68.5	72.9	73.0
February	46.4	43.6	49.8	41.0	57.6	70.1	58.5	72.9	49.4
March	39.7	43.7	46.6	38.7	55.9	71.9	68.8	73.8	45.9
<i>March quarter 1995</i>	<i>53.1</i>	<i>51.4</i>	<i>57.3</i>	<i>50.1</i>	<i>62.3</i>	<i>72.7</i>	<i>65.5</i>	<i>73.2</i>	<i>56.3</i>
UNIT LETTINGS ('000)									
<i>March quarter 1994</i>	<i>76.8</i>	<i>36.6</i>	<i>134.2</i>	<i>10.3</i>	<i>24.6</i>	<i>23.3</i>	<i>4.0</i>	<i>4.9</i>	<i>314.6</i>
<i>1995—</i>									
January	35.4	14.0	61.1	4.4	9.8	9.1	0.9	3.3	137.8
February	24.7	10.7	42.2	2.7	8.4	7.5	0.7	2.8	99.6
March	24.2	12.0	45.5	3.2	9.6	9.6	0.9	3.6	108.5
<i>March quarter 1995</i>	<i>84.2</i>	<i>36.7</i>	<i>148.8</i>	<i>10.3</i>	<i>27.8</i>	<i>26.2</i>	<i>2.4</i>	<i>9.6</i>	<i>345.9</i>
AVERAGE LENGTH OF STAY (days)									
<i>March quarter 1994</i>	<i>6.3</i>	<i>4.2</i>	<i>6.4</i>	<i>5.9</i>	<i>5.0</i>	<i>2.2</i>	<i>3.6</i>	<i>6.7</i>	<i>5.7</i>
<i>1995—</i>									
January	6.9	5.5	6.8	6.6	5.5	2.2	5.2	5.2	6.2
February	5.7	4.3	5.9	5.6	4.6	2.3	5.6	5.4	5.3
March	5.5	4.2	5.6	5.1	4.3	2.0	5.6	4.8	5.0
<i>March quarter 1995</i>	<i>6.1</i>	<i>4.7</i>	<i>6.2</i>	<i>5.9</i>	<i>4.8</i>	<i>2.2</i>	<i>5.5</i>	<i>5.1</i>	<i>5.6</i>
TAKINGS FROM ACCOMMODATION (\$'000)									
<i>March quarter 1994</i>	<i>30,463</i>	<i>11,386</i>	<i>55,714</i>	<i>3,546</i>	<i>7,584</i>	<i>3,725</i>	<i>898</i>	<i>2,851</i>	<i>116,167</i>
<i>1995—</i>									
January	18,936	6,097	31,615	1,887	3,842	1,649	301	1,471	65,798
February	8,234	3,610	15,288	918	2,578	1,334	251	1,236	33,449
March	7,847	4,025	15,224	971	2,802	1,408	297	1,400	33,974
<i>March quarter 1995</i>	<i>35,016</i>	<i>13,733</i>	<i>62,127</i>	<i>3,776</i>	<i>9,222</i>	<i>4,391</i>	<i>849</i>	<i>4,107</i>	<i>133,221</i>

(a) Employment numbers exclude real estate agents and their employees.

TABLE 7—CARAVAN PARKS BY TYPE AND BY STATE/TERRITORY, AUSTRALIA

Particulars	New South Wales			Victoria			Queensland		
	Short-term	Long-term	Total	Short-term	Long-term	Total	Short-term	Long-term	Total
ESTABLISHMENTS, CAPACITY AND EMPLOYMENT									
<i>March quarter 1994—</i>									
Establishments	471	326	797	441	158	599	232	397	629
Capacity									
On-site vans	3,274	3,665	6,939	2,055	1,940	3,995	1,062	4,763	5,825
Other powered sites	42,501	20,657	63,158	36,452	8,669	45,121	10,831	21,424	32,255
Unpowered sites	15,526	4,835	20,361	13,261	2,066	15,327	8,261	5,162	13,423
Cabins, flats, etc.	2,876	1,915	4,791	2,284	920	3,204	1,243	2,308	3,551
<i>Total capacity</i>	<i>64,177</i>	<i>31,072</i>	<i>95,249</i>	<i>54,052</i>	<i>13,595</i>	<i>67,647</i>	<i>21,397</i>	<i>33,657</i>	<i>55,054</i>
Sites occupied by long-term guests	3,544	12,235	15,779	1,849	4,726	6,575	1,769	14,659	16,428
Other sites permanently reserved	21,998	1,295	23,293	14,976	385	15,361	675	497	1,172
Employment (persons)	1,893	1,183	3,076	1,433	484	1,917	806	1,458	2,264
<i>March quarter 1995—</i>									
Establishments	478	311	789	435	164	599	238	391	629
Capacity									
On-site vans	3,341	3,513	6,854	2,018	1,895	3,913	1,041	4,740	5,781
Other powered sites	43,043	20,076	63,119	36,393	8,545	44,938	10,823	21,363	32,186
Unpowered sites	15,722	4,795	20,517	12,580	2,170	14,750	7,785	4,930	12,715
Cabins, flats, etc.	3,055	1,962	5,017	2,316	1,201	3,517	1,322	2,439	3,761
<i>Total capacity</i>	<i>65,161</i>	<i>30,346</i>	<i>95,507</i>	<i>53,307</i>	<i>13,811</i>	<i>67,118</i>	<i>20,971</i>	<i>33,472</i>	<i>54,443</i>
Sites occupied by long-term guests	3,680	12,052	15,732	1,717	4,800	6,517	1,742	14,191	15,933
Other sites permanently reserved	22,175	1,022	23,197	15,389	344	15,733	728	524	1,252
Employment (persons)	2,015	1,151	3,166	1,419	504	1,923	863	1,417	2,280
SITE NIGHTS OCCUPIED ('000)									
<i>March quarter 1994</i>	<i>3,224.5</i>	<i>1,490.0</i>	<i>4,714.4</i>	<i>2,204.2</i>	<i>578.1</i>	<i>2,782.3</i>	<i>527.4</i>	<i>1,607.6</i>	<i>2,135.0</i>
<i>1995—</i>									
January	1,321.8	539.1	1,860.9	937.3	199.5	1,136.9	232.3	548.5	780.7
February	942.9	433.2	1,376.1	619.1	180.3	799.5	136.9	478.7	615.6
March	1,005.7	475.1	1,480.8	688.7	197.4	886.2	156.9	525.3	682.2
<i>March quarter 1995</i>	<i>3,270.5</i>	<i>1,447.3</i>	<i>4,717.8</i>	<i>2,245.2</i>	<i>577.3</i>	<i>2,822.5</i>	<i>526.1</i>	<i>1,552.5</i>	<i>2,078.5</i>
SITE OCCUPANCY RATES (per cent)									
<i>March quarter 1994</i>	<i>55.8</i>	<i>53.3</i>	<i>55.0</i>	<i>45.3</i>	<i>47.2</i>	<i>45.7</i>	<i>27.5</i>	<i>53.1</i>	<i>43.1</i>
<i>1995—</i>									
January	65.4	57.3	62.9	56.7	46.6	54.6	35.7	52.9	46.3
February	51.7	51.0	51.5	41.5	46.6	42.5	23.3	51.3	40.5
March	49.9	50.5	50.1	41.7	46.1	42.6	24.1	51.0	40.6
<i>March quarter 1995</i>	<i>55.8</i>	<i>53.0</i>	<i>54.9</i>	<i>46.8</i>	<i>46.4</i>	<i>46.7</i>	<i>27.9</i>	<i>51.7</i>	<i>42.5</i>
TAKINGS FROM ACCOMMODATION (\$'000)									
<i>March quarter 1994</i>	<i>29,955</i>	<i>16,901</i>	<i>46,856</i>	<i>17,183</i>	<i>6,116</i>	<i>23,299</i>	<i>6,285</i>	<i>15,594</i>	<i>21,878</i>
<i>1995—</i>									
January	15,815	7,048	22,863	9,548	2,250	11,798	3,181	5,636	8,817
February	7,659	4,845	12,504	3,797	1,899	5,697	1,581	4,741	6,322
March	7,862	5,233	13,094	4,436	2,139	6,575	1,903	5,288	7,191
<i>March quarter 1995</i>	<i>31,335</i>	<i>17,126</i>	<i>48,461</i>	<i>17,781</i>	<i>6,288</i>	<i>24,069</i>	<i>6,666</i>	<i>15,665</i>	<i>22,331</i>

TABLE 7—CARAVAN PARKS BY TYPE AND BY STATE/TERRITORY, AUSTRALIA—continued

Particulars	South Australia			Western Australia			Tasmania		
	Short-term	Long-term	Total	Short-term	Long-term	Total	Short-term	Long-term	Total
ESTABLISHMENTS, CAPACITY AND EMPLOYMENT									
<i>March quarter 1994—</i>									
Establishments	166	44	210	198	113	311	58	12	70
Capacity									
On-site vans	934	245	1,179	1,173	1,087	2,260	284	120	404
Other powered sites	11,908	2,859	14,767	11,838	7,413	19,251	2,943	519	3,462
Unpowered sites	5,510	1,042	6,552	4,018	1,880	5,898	2,197	240	2,437
Cabins, flats, etc.	1,254	390	1,644	843	565	1,408	315	97	412
<i>Total capacity</i>	<i>19,606</i>	<i>4,536</i>	<i>24,142</i>	<i>17,872</i>	<i>10,945</i>	<i>28,817</i>	<i>5,739</i>	<i>976</i>	<i>6,715</i>
Sites occupied by long-term guests	604	1,378	1,982	1,221	3,833	5,054	212	190	402
Other sites permanently reserved	1,505	37	1,542	1,937	273	2,210	858	16	874
Employment (persons)	594	155	749	690	390	1,080	184	43	227
<i>March quarter 1995—</i>									
Establishments	172	43	215	206	107	313	63	12	75
Capacity									
On-site vans	883	266	1,149	1,118	1,183	2,301	272	121	393
Other powered sites	12,071	2,737	14,808	12,214	7,299	19,513	3,090	507	3,597
Unpowered sites	5,739	880	6,619	4,125	1,992	6,117	2,175	233	2,408
Cabins, flats, etc.	1,439	336	1,775	979	570	1,549	338	98	436
<i>Total capacity</i>	<i>20,132</i>	<i>4,219</i>	<i>24,351</i>	<i>18,436</i>	<i>11,044</i>	<i>29,480</i>	<i>5,875</i>	<i>959</i>	<i>6,834</i>
Sites occupied by long-term guests	704	1,372	2,076	1,307	3,823	5,130	280	190	470
Other sites permanently reserved	1,553	28	1,581	2,197	193	2,390	1,021	17	1,038
Employment (persons)	626	149	775	750	401	1,151	227	43	270
SITE NIGHTS OCCUPIED ('000)									
<i>March quarter 1994</i>	<i>500.3</i>	<i>155.9</i>	<i>656.2</i>	<i>563.3</i>	<i>451.5</i>	<i>1,014.8</i>	<i>186.8</i>	<i>33.4</i>	<i>220.2</i>
<i>1995—</i>									
January	226.6	54.8	281.3	252.5	160.7	413.2	85.3	11.0	96.3
February	136.2	47.7	183.8	170.6	139.7	310.3	63.8	9.1	72.9
March	150.7	53.9	204.6	182.0	151.6	333.6	62.3	9.8	72.1
<i>March quarter 1995</i>	<i>513.4</i>	<i>156.3</i>	<i>669.8</i>	<i>605.0</i>	<i>452.1</i>	<i>1,057.1</i>	<i>211.5</i>	<i>29.8</i>	<i>241.3</i>
SITE OCCUPANCY RATES (per cent)									
March quarter 1994	28.4	38.2	30.2	35.1	45.8	39.2	36.2	38.1	36.4
<i>1995—</i>									
January	36.4	41.9	37.3	44.2	46.9	45.2	46.9	36.9	45.5
February	24.2	40.3	27.0	33.0	45.2	37.6	38.8	33.9	38.1
March	24.2	41.2	27.1	32.1	44.3	36.7	34.2	32.9	34.0
March quarter 1995	28.4	41.2	30.6	36.6	45.5	39.9	40.0	34.6	39.2
TAKINGS FROM ACCOMMODATION (\$'000)									
<i>March quarter 1994</i>	<i>6,611</i>	<i>1,580</i>	<i>8,192</i>	<i>6,665</i>	<i>5,290</i>	<i>11,954</i>	<i>2,120</i>	<i>475</i>	<i>2,595</i>
<i>1995—</i>									
January	3,430	575	4,006	3,524	2,047	5,571	1,014	141	1,156
February	1,727	446	2,173	1,798	1,658	3,455	762	125	887
March	1,890	517	2,406	2,007	1,836	3,843	694	150	844
<i>March quarter 1995</i>	<i>7,047</i>	<i>1,538</i>	<i>8,585</i>	<i>7,328</i>	<i>5,541</i>	<i>12,869</i>	<i>2,471</i>	<i>416</i>	<i>2,886</i>

TABLE 7—CARAVAN PARKS BY TYPE AND BY STATE/TERRITORY, AUSTRALIA—continued

Particulars	Northern Territory		Australian Capital Territory		Australia		
	Short-term	Long-term	Total	Total	Short-term	Long-term	Total
ESTABLISHMENTS, CAPACITY AND EMPLOYMENT							
<i>March quarter 1994—</i>							
Establishments	55	25	80	5	1,621	1,080	2,701
Capacity							
On-site vans	64	250	314	151	8,846	12,221	21,067
Other powered sites	2,573	1,897	4,470	494	119,046	63,932	182,978
Unpowered sites	3,088	784	3,872	419	51,861	16,428	68,289
Cabins, flats, etc.	151	73	224	10	8,966	6,278	15,244
<i>Total capacity</i>	<i>5,876</i>	<i>3,004</i>	<i>8,880</i>	<i>1,074</i>	<i>188,719</i>	<i>98,859</i>	<i>287,578</i>
Sites occupied by long-term guests	187	878	1,065	306	9,386	38,205	47,591
Other sites permanently reserved	5	8	13	-	41,954	2,511	44,465
Employment (persons)	213	86	299	46	5,813	3,845	9,658
<i>March quarter 1995—</i>							
Establishments	61	20	81	5	1,653	1,053	2,706
Capacity							
On-site vans	122	200	322	150	8,795	12,068	20,863
Other powered sites	2,883	1,585	4,468	495	120,517	62,607	183,124
Unpowered sites	3,479	632	4,111	419	51,605	16,051	67,656
Cabins, flats, etc.	189	82	271	10	9,638	6,698	16,336
<i>Total capacity</i>	<i>6,673</i>	<i>2,499</i>	<i>9,172</i>	<i>1,074</i>	<i>190,555</i>	<i>97,424</i>	<i>287,979</i>
Sites occupied by long-term guests	300	761	1,061	298	9,730	37,487	47,217
Other sites permanently reserved	3	1	4	-	43,066	2,129	45,195
Employment (persons)	232	71	303	49	6,132	3,785	9,917
SITE NIGHTS OCCUPIED ('000)							
<i>March quarter 1994</i>	<i>44.5</i>	<i>94.0</i>	<i>138.5</i>	<i>38.5</i>	<i>7,251.0</i>	<i>4,449.1</i>	<i>11,700.1</i>
<i>1995—</i>							
January	19.8	26.7	46.6	15.2	3,075.7	1,555.4	4,631.0
February	18.1	24.1	42.2	11.5	2,087.6	1,324.3	3,411.9
March	22.9	27.3	50.2	13.4	2,269.3	1,453.8	3,723.1
<i>March quarter 1995</i>	<i>60.9</i>	<i>78.1</i>	<i>139.0</i>	<i>40.1</i>	<i>7,432.6</i>	<i>4,333.5</i>	<i>11,766.1</i>
SITE OCCUPANCY RATES (per cent)							
<i>March quarter 1994</i>	<i>8.4</i>	<i>34.8</i>	<i>17.3</i>	<i>39.9</i>	<i>42.7</i>	<i>50.0</i>	<i>45.2</i>
<i>1995—</i>							
January	9.6	34.5	16.4	45.5	52.1	51.5	51.9
February	9.7	34.5	16.4	38.4	39.1	48.6	42.3
March	11.1	35.2	17.6	40.3	38.5	48.3	41.8
<i>March quarter 1995</i>	<i>10.1</i>	<i>34.7</i>	<i>16.8</i>	<i>41.5</i>	<i>43.4</i>	<i>49.5</i>	<i>45.4</i>
TAKINGS FROM ACCOMMODATION (\$'000)							
<i>March quarter 1994</i>	<i>666</i>	<i>899</i>	<i>1,566</i>	<i>757</i>	<i>69,484</i>	<i>47,613</i>	<i>117,097</i>
<i>1995—</i>							
January	288	259	547	306	36,801	18,263	55,063
February	263	243	506	188	17,587	14,145	31,731
March	320	266	585	217	19,111	15,644	34,756
<i>March quarter 1995</i>	<i>871</i>	<i>768</i>	<i>1,638</i>	<i>711</i>	<i>73,499</i>	<i>48,052</i>	<i>121,550</i>

TABLE 8 — VISITOR HOSTELS BY STATE/TERRITORY, AUSTRALIA

Particulars	New South Wales (a)	Victoria	Queensland	South Australia	Western Australia	Tasmania	Northern Territory	Australia
ESTABLISHMENTS, CAPACITY AND EMPLOYMENT								
<i>March quarter 1994—</i>								
Establishments	79	49	122	44	54	39	39	426
Bed spaces	5,129	2,789	8,233	2,098	3,068	1,487	2,944	25,748
Employment (persons)	297	160	550	144	135	108	141	1,535
<i>March quarter 1995—</i>								
Establishments	86	56	114	40	54	43	34	427
Bed spaces	5,551	3,043	7,876	2,012	2,794	1,786	2,598	25,660
Employment (persons)	356	170	588	129	140	115	139	1,637
GUEST NIGHTS ('000)								
<i>March quarter 1994</i>	268.7	117.7	339.3	67.1	114.0	35.7	100.4	1,042.9
<i>1995—</i>								
January	111.6	45.7	121.1	21.8	39.5	19.1	29.1	387.8
February	97.4	38.3	98.3	20.8	35.0	13.8	29.3	332.9
March	103.0	45.5	108.2	23.5	37.1	13.7	35.8	366.7
<i>March quarter 1995</i>	312.1	129.4	327.5	66.1	111.5	46.6	94.1	1,087.4
BED OCCUPANCY RATES (per cent)								
<i>March quarter 1994</i>	58.2	46.9	46.3	35.5	41.9	26.7	38.1	45.3
<i>1995—</i>								
January	64.9	48.4	49.6	34.9	45.6	34.6	36.1	48.8
February	62.7	44.9	44.6	37.0	45.3	27.6	40.3	46.4
March	59.9	48.3	44.3	37.7	42.9	24.7	44.4	46.1
<i>March quarter 1995</i>	62.5	47.3	46.2	36.5	44.6	29.0	40.3	47.1
GUEST ARRIVALS ('000)								
<i>March quarter 1994</i>	79.4	47.1	135.8	31.5	37.9	25.0	51.9	408.6
<i>1995—</i>								
January	33.5	17.9	45.3	9.4	14.1	11.9	14.2	146.3
February	27.1	16.1	38.4	8.7	12.2	8.5	14.3	125.3
March	30.3	19.0	41.6	10.1	13.1	8.0	17.6	139.6
<i>March quarter 1995</i>	90.8	53.0	125.3	28.2	39.5	28.3	46.0	411.2
AVERAGE LENGTH OF STAY (days)								
<i>March quarter 1994</i>	3.4	2.5	2.5	2.1	3.0	1.4	1.9	2.6
<i>1995—</i>								
January	3.3	2.6	2.7	2.3	2.8	1.6	2.1	2.7
February	3.6	2.4	2.6	2.4	2.9	1.6	2.1	2.7
March	3.4	2.4	2.6	2.3	2.8	1.7	2.0	2.6
<i>March quarter 1995</i>	3.4	2.4	2.6	2.3	2.8	1.6	2.0	2.6
TAKINGS FROM ACCOMMODATION (\$'000)								
<i>March quarter 1994</i>	3,575	1,529	3,871	673	1,228	406	1,279	12,560
<i>1995—</i>								
January	1,584	588	1,511	232	439	218	358	4,929
February	1,368	507	1,207	223	408	165	366	4,244
March	1,448	596	1,326	233	428	164	451	4,645
<i>March quarter 1995</i>	4,400	1,691	4,044	688	1,275	547	1,175	13,819

(a) Including Australian Capital Territory establishments.

EXPLANATORY NOTES

INTRODUCTION

1 This publication contains data, for Australia and each State and Territory, from a quarterly survey of tourist accommodation establishments. The period covered by the latest survey is the 3 months ended 31 March 1995.

SCOPE

2 Tourist accommodation establishments currently included in the survey comprise two groups:

- Establishments which provide predominantly short-term accommodation (i.e. for periods of less than 2 months) to the general public. These include:

Hotels, motels and guest houses, with facilities being hotels licensed to operate a public bar and motels, private hotels and guest houses all of which provide a bath (or shower) and toilet in most guest rooms and have breakfast available for guests.

NOTE: From December quarter 1993, hotel, motel and guest house establishments with fewer than five rooms have been formally excluded from the scope of this statistical collection. This change in scope resulted in the exclusion of 95 establishments which in the September quarter 1993 Survey aggregates for Australia represented 1.9 per cent of hotel, motel and guest house establishments but accounted for only 0.2 per cent of accommodation capacity and less than 0.1 per cent of occupancy and takings.

Holiday flats, units and houses (excluding establishments predominantly operated on a time share basis) which are operated by owners or managers who have sole letting rights to at least five flats, units or houses or by real estate agents for short-term letting. They are mainly self-contained in terms of cooking, bath (or shower) and toilet facilities and do not have breakfast available for guests. Data for holiday flats, units and houses include short-term owner occupation as well as paying guest occupation.

Visitor hostels which provide accommodation to visitors on a bed basis (rather than by the room). This category does not include establishments providing charity type accommodation (e.g. Salvation Army hostels) nor hotels, motels and guest houses without in-room facilities which provide accommodation on a per room basis.

- *Caravan parks* which provide either predominantly short-term (i.e. for periods of less than 2 months) or predominantly long-term (i.e. for periods of 2 months or more) accommodation to the general public and which provide powered sites for caravans and toilet, shower and laundry facilities for guests.

3 Data collected and published for each type of establishment (other than holiday flats, units and houses) include both long-term and short-term guests at these establishments.

4 Establishments which provide more than one type of accommodation (e.g. a motel with attached caravan park) are treated as two or more separate establishments. However, self-contained units, flats, cabins, etc. attached to hotels, motels or to caravan parks are included in the capacity for those establishments and not treated as separate holiday flat, unit or house establishments.

DEFINITIONS

5 *Number of establishments.* For hotels, motels and guest houses, caravan parks and visitor hostels, the number of establishments within the scope of the survey which operated for any part of the survey period, or which closed temporarily for the quarter for seasonal reasons.

6 *Number of letting entities.* For holiday flats, units and houses, the number of owners, managers or real estate agents within the scope of the survey who operated for any part of the survey period.

7 *Capacity in terms of Guest rooms, Bed spaces, Holiday units or Caravan park sites, etc.* is the maximum number available to accommodate paying guests during the survey period. Capacity closed temporarily for seasonal reasons is included.

8 *Bed spaces.* Three-quarter beds are counted as one bed space; double beds as two bed spaces. Cots are excluded.

EXPLANATORY NOTES—continued

DEFINITIONS—continued

9 *Total caravan park capacity* comprises *On-site vans*, *Other powered sites*, *Unpowered sites* and *Cabins*, etc.

10 *Room nights available*. The number of guest rooms available multiplied by the number of days for which they were available during the survey period. Includes operating periods only for establishments closing (other than for seasonal reasons) or opening during the survey period.

11 Occupancy in terms of *Room nights*, *Unit nights* or *Site nights occupied* refers to the total number of nights each guest room, holiday unit or caravan park site, etc. was occupied during the survey period.

NOTE: From September quarter 1992, caravan park sites, etc. permanently reserved for 2 months or more at the end of the survey period but only casually occupied by their tenants have been recorded continuously as *Site nights occupied* irrespective of whether the tenants of individual sites were in residence on any particular night. (See also paragraph 14 below). Previously, usage of these sites was recorded as *Site nights occupied* only when their tenants were in the park. Total site occupancy rates from September quarter 1992 are therefore not comparable with those from previous quarters.

12 Occupancy in terms of *Guest nights* refers to the total number of nights each paying guest stayed during the survey period.

13 *Sites occupied by long-term guests*. The total number of sites, etc. occupied at the end of the survey period by guests who have stayed continuously for 2 months or more.

14 *Other sites permanently reserved*. The total number of powered and unpowered sites, on-site vans and cabins, etc. continuously let for 2 months or more by the end of the survey period to tenants who occupy the sites only on a casual or sporadic basis. Separate data for this item are available only from September quarter 1992.

15 *Occupancy rates* represent occupancy expressed as a percentage of total capacity available during the survey period -- e.g.

$$\text{Room occupancy rate (\%)} \text{ for the period} = \frac{\text{Room nights occupied}}{(\text{Guest rooms}) \times (\text{No. of days in the period})} \times 100$$

providing that, for establishments closing (other than for seasonal reasons) or opening during the survey period, the denominator of the above expression includes only operating periods.

16 *Guest arrivals*. The total number of paying guests counted only on the first night they stayed at the accommodation establishment.

17 *Unit lettings*. The total number of times a holiday flat, unit or house was occupied by a new tenant, counted only on the first night it was occupied by the new tenant.

18 *Average length of stay* is expressed in number of days and calculated:

- for hotels, motels and guest houses and for visitor hostels, by dividing *Guest nights* by *Guest arrivals* and
- for holiday flats, units and houses, by dividing *Unit nights occupied* by *Unit lettings*.

19 *Takings from accommodation*. Revenue received from the provision of accommodation. Takings from meals are excluded. Takings from accommodation for each month generally represent the takings received during that month. Where payments are received in advance of, or after, the provision of accommodation to guests, the monthly figure for takings from accommodation may not necessarily bear a direct relationship to the number of guests accommodated during the month. Rental and storage fees paid to caravan parks for the keeping of private vans in parks are included in the takings of the month they are received.

EXPLANATORY NOTES —continued

DEFINITIONS —continued

20 *Star grading.* The grading of hotels and motels with facilities based on the classification system used by members of the Australian Automobile Association (AAA). The gradings are allocated according to a points system based on the amenities and facilities available to guests. Details of the grading scheme are contained in the RACV-RAASA members' publication *Accommodation Australia*, or the individual tour guides produced by members of the AAA. For the purpose of classifying establishments to a star grading in this publication, 'half' star gradings are ignored (e.g. a two and a half star grading has been shown as two star).

21 *Employment.* The number of persons working at accommodation establishments at the end of the survey period (including working proprietors and those working on other than accommodation activities).

UNPUBLISHED STATISTICS

22 The ABS may make available on request certain unpublished tourist accommodation statistics. A charge may be made for this information.

RELATED PUBLICATIONS

23 Publications for Australia, and each State and Territory, are released by the respective offices of the ABS. Tourist accommodation statistics for past quarters are available on request. Other ABS publications which may be of interest include:

Directory of Tourism Statistics (1130.0) (irregular; first and latest issue: 1991)

Overseas Arrivals and Departures, Australia (3401.0) (monthly)

Tourism Indicators Australia (8634.0) (quarterly)

Selected Accommodation Establishments, Australia, 1984-85 (8636.0) (irregular)

Tourist Accommodation Atlas of Queensland, 1991 (8645.3) (irregular)

24 Current publications produced by the ABS are listed in the *Catalogue of Publications and Products*, (1101.0). The ABS also issues the *Release Advice* (1105.0) on Tuesdays and Fridays which lists publications to be released in the next few days. Both the *Catalogue* and *Release Advice* are available from any ABS office.

SYMBOLS AND OTHER USAGES

n.a. not available
 n.p. not available for publication but included in totals where applicable
 r figure or series revised since previous issue
 .. not applicable
 nil or rounded to zero

25 Where figures have been rounded, discrepancies may occur between totals and the sums of the component items.

ELECTRONIC SERVICES

DISCOVERY. The ABS intends discontinuing its statistical information service on DISCOVERY. Please contact Peter Davidson (Phone 06 252 6684) to discuss possible alternatives for acquiring statistics or if you wish to comment on this proposal.

PC-AUSSTATS. Thousands of up-to-date time series are available on this ABS on-line service. For further information, phone the PC-AUSSTATS Help Desk on (06) 252 6017.

TELESTATS. This service provides:

- foreign trade statistics tailored to users' requirements. Further information is available on (06) 252 5404
- text and tables for selected Main Economic Indicator publications. Further information is available on (06) 252 5405.

FLOPPY DISK SERVICE

Selected ABS statistics are available on floppy disk. Further information is available on (06) 252 6684.

W. McLennan
Australian Statistician





For more information ...

The ABS publishes a wide range of statistics and other information on Australia's economic and social conditions. Details of what is available in various publications and other products can be found in the *ABS Catalogue of Publications and Products* available at all ABS Offices (see below for contact details).

Information Consultancy Service

Information tailored to special needs of clients can be obtained from the Information Consultancy Service available at ABS Offices (see Information Inquiries below for contact details).

National Dial-a-Statistic Line

0055 86 400

(Steadycom P/L: premium rate 25c/21.4 secs.)

This number gives 24-hour access, 365 days a year, for a range of statistics.

Electronic Data Services

A large range of data is available via on-line services, diskette, magnetic tape, tape cartridge and CD ROM. For more details about these electronic data services, contact any ABS Office (see below).

Bookshops and Subscriptions

There is a large number of ABS publications available from ABS bookshops (see below Bookshop Sales for contact details). The ABS also provides a subscription service through which nominated publications are supplied by mail on a regular basis (telephone Subscription Service toll free on 008 02 0608 Australia wide).

Sales and Inquiries

Regional Offices	Information Inquiries	Bookshop Sales
SYDNEY (02)	268 4611	268 4620
MELBOURNE (03)	615 7000	615 7829
BRISBANE (07)	222 6351	222 6350
PERTH (09)	360 5140	360 5307
ADELAIDE (08)	237 7100	237 7582
HOBART (002)	20 5800	20 5800
CANBERRA (06)	252 6627	207 0326
DARWIN (089)	43 2111	43 2111
National Office		
ACT (06)	252 6007	008 020 608

ABS E-mail Addresses

Keylink	STAT.INFO/ABS
X.400	(C:AU,A:TELMEMO,O:ABS,SN:INFO,FN:STAT)
Internet	STAT.INFO@ABS. TELEMEMO.AU



Information Services, ABS, PO Box 10, Belconnen ACT 2616

